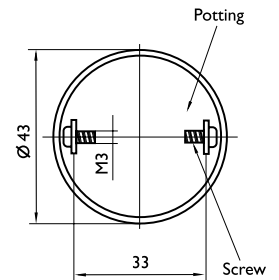
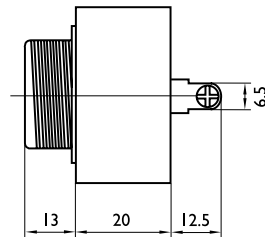
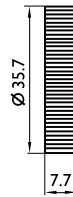
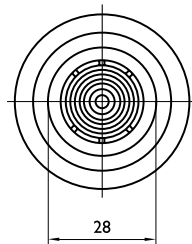


# Piezo Indicator

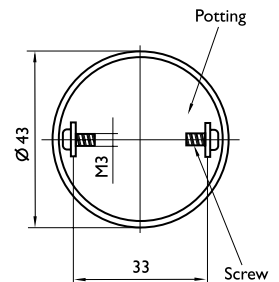
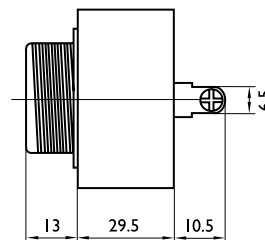
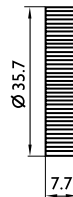
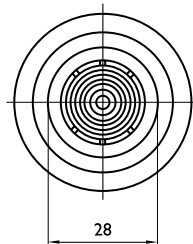
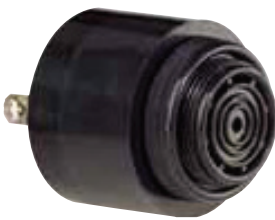
## DC Devices (with internal drive circuits)

### Panel Mount - Screw Type

#### ABI-024-RC & ABI-025-RC



#### ABI-027-RC



Dimensions : Millimetres  
Tolerance: ±0.5mm

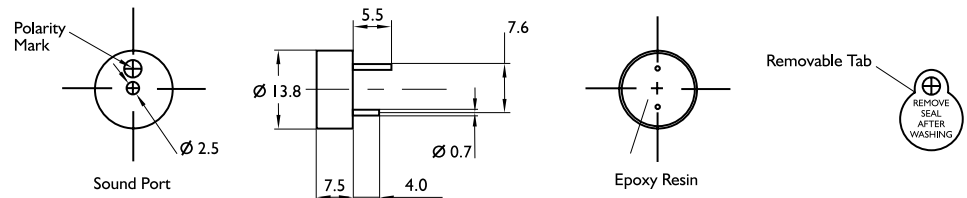
## Specifications

Part Number	ABI-024-RC	ABI-025-RC	ABI-027-RC
Rated Voltage	12V DC	12V DC	220V DC/AC
Operating Voltage	4 - 28V DC	6 - 28VDC	60 - 250V DC/AC
Rated Current	≤ 8mA	≤ 6mA	≤ 16mA
Sound Output level	≥ 97dB @30cm	≥ 88dB @30cm	≥ 91dB @30cm
Resonant Frequency	2800Hz ±500Hz	2900Hz ±500Hz	2800Hz ±500Hz
Tone	Continuous	Flat Pulse	Flat Pulse
Housing Material	Black ABS	Black ABS	Black ABS
Operating Temperature	-20°C to +60°C	-20°C to +60°C	-20°C to +60°C
Storage Temperature	-30°C to +70°C	-30°C to +70°C	-30°C to +70°C
Weight	43g	43g	43g

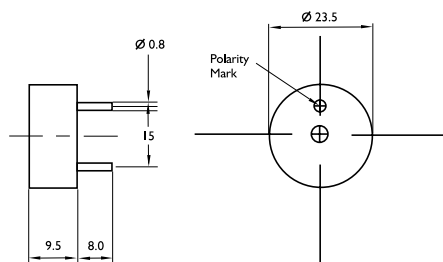
# Piezo Indicator

## Through Hole Type

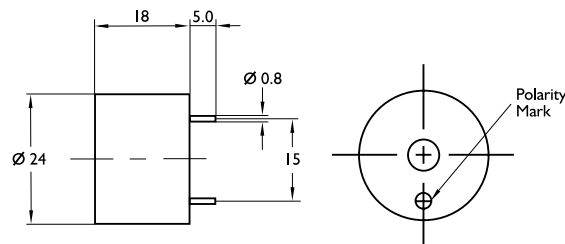
### ABI-001-RC



### ABI-003-RC



### ABI-007-RC

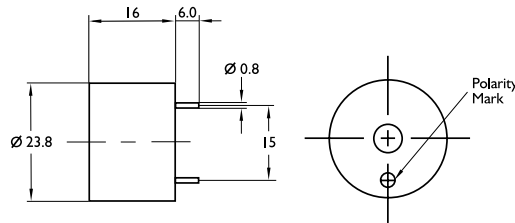


Dimensions : Millimetres  
Tolerance: ±0.5mm

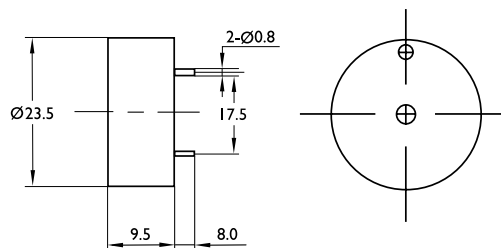
## Specifications

Part Number	ABI-001-RC	ABI-003-RC	ABI-007-RC
Rated Voltage	12V DC	12V DC	12V DC
Operating Voltage	3 ~ 16V DC	3 ~ 20V DC	3 ~ 16V DC
Rated Current	≤ 7mA	≤ 15mA	≤ 8mA
Sound Output level	≥ 80dB @10cm	≥ 95dB @10cm	≥ 90dB @30cm
Resonant Frequency	4000Hz ±500Hz	3400Hz ±500Hz	3700Hz ±500Hz
Tone	Continuous		
Housing Material	Black Noryl		
Operating Temperature	-20°C to +70°C	-20°C to +60°C	
Storage Temperature	-30°C to +80°C	-30°C to +70°C	
Pin Pitch	7.6mm	15mm	15mm
Weight	1g	4g	5g

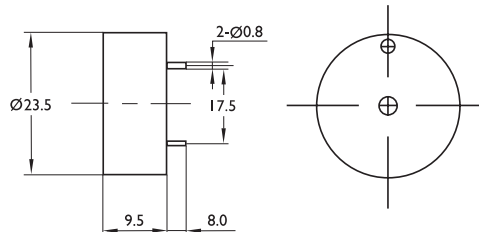
## ABI-008-RC



## ABI-033-RC



## ABI-051-RC



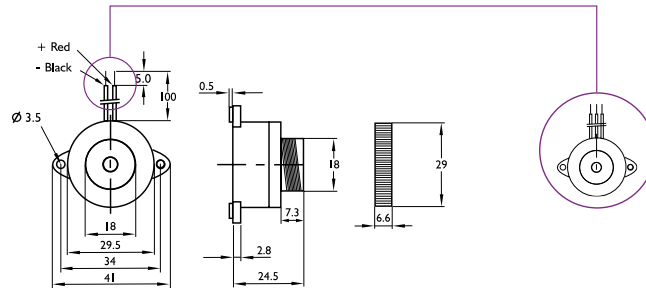
Dimensions : Millimetres  
Tolerance: ±0.5mm

## Specifications

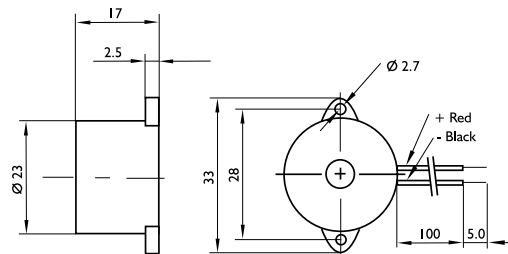
Part Number	ABI-008-RC	ABI-033-RC	ABI-051-RC
Rated Voltage	12V DC	24V DC	12V DC
Operating Voltage	3 ~ 20V DC	3 ~ 30V DC	3 ~ 20V DC
Rated Current	≤ 8mA	≤ 30mA	≤ 15mA
Sound Output level	≥ 85dB @30cm	≥ 95dB @10cm	≥ 95dB @10cm
Resonant Frequency	2900Hz ±500Hz	3400Hz ±500Hz	
Tone	Continuous		
Housing Material	Black Noryl		
Operating Temperature	-20°C to +60°C	-20°C to +70°C	-20°C to +70°C
Storage Temperature	-30°C to +70°C	-30°C to +80°C	-40°C to +85°C
Pin Pitch	15mm	17.5mm	17.5
Weight	6g	4g	4g

## Flange Mount - Wire Lead Type

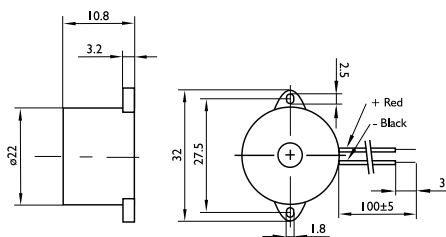
ABI-004-RC & ABI-005-RC



ABI-006-RC



ABI-014-RC

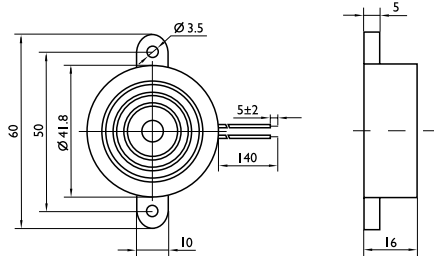


Dimensions : Millimetres  
Tolerance: ±0.5mm

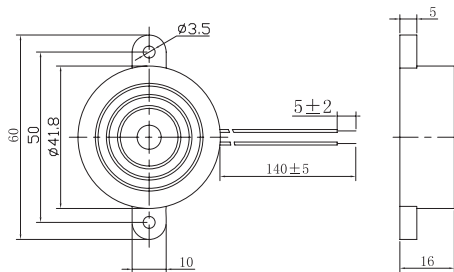
## Specifications

Part Number	ABI-004-RC	ABI-005-RC	ABI-006-RC	ABI-014-RC
Rated Voltage	12V DC	24V DC	12V DC	12V DC
Operating Voltage	1.5 ~ 16VDC	1.5 ~ 28VDC	3 ~ 16VDC	3 ~ 30VDC
Rated Current	≤ 15mA	≤ 20mA	≤ 8mA	≤ 3mA
Sound Output level	≥ 95dB @30cm	≥ 95dB @30cm	≥ 90dB @30cm	≥ 80dB @30cm
Resonant Frequency	3500Hz ±500Hz	3500Hz ±500Hz	3700Hz ±500Hz	4500Hz ±500Hz
Tone	Continuous			
Housing Material	Black ABS			
Operating Temperature	-20°C to +60°C	-20°C to +60°C	-20°C to +60°C	-20°C to +60°C
Storage Temperature	-30°C to +70°C	-30°C to +70°C	-30°C to +70°C	-30°C to +70°C
Lead Wire	UL1007 AWG26	UL1007 AWG26	UL1095 AWG28	UL1007 AWG26
Lead Length	100mm			
Weight	15g		5g	4g

## ABI-023-RC



## ABI-056-RC



Dimensions : Millimetres  
Tolerance: ±0.5mm

## Specifications

Part Number	ABI-023-RC	ABI-056-RC
Rated Voltage	12V DC	12V DC
Operating Voltage	3 ~ 20VDC	3 ~ 28VDC
Rated Current	≤ 10mA	≤ 9mA
Sound Output level	≥ 96dB @30cm	≥ 90dB @30cm
Resonant Frequency	2800Hz ±500Hz	2800Hz ±500Hz
Tone	Continuous	Slow Pulse 1.2 ±30%Hz
Housing Material	Black ABS	Black ABS
Operating Temperature	-20°C to +60°C	-20°C to +60°C
Storage Temperature	-30°C to +70°C	-30°C to +70°C
Lead Wire	UL1007 AWG28	UL1007 AWG24
Lead Length	140mm	140mm
Weight	15g	15g

**Important Notice :** This data sheet and its contents (the "Information") belong to the members of the AVNET group of companies (the "Group") or are licensed to it. No licence is granted for the use of it other than for information purposes in connection with the products to which it relates. No licence of any intellectual property rights is granted. The Information is subject to change without notice and replaces all data sheets previously supplied. The Information supplied is believed to be accurate but the Group assumes no responsibility for its accuracy or completeness, any error in or omission from it or for any use made of it. Users of this data sheet should check for themselves the Information and the suitability of the products for their purpose and not make any assumptions based on information included or omitted. Liability for loss or damage resulting from any reliance on the Information or use of it (including liability resulting from negligence or where the Group was aware of the possibility of such loss or damage arising) is excluded. This will not operate to limit or restrict the Group's liability for death or personal injury resulting from its negligence. Multicomp Pro is the registered trademark of Premier Farnell Limited 2019.